

# Upgrading from IBM TM1 to IBM Planning Analytics

*Built on IBM TM1 technology — with speed, agility and  
foresight for the cognitive era*



## Contents

- 2 Highlights
- 3 Speed, agility and foresight in one solution
- 4 IBM Planning Analytics for Microsoft Excel
- 4 IBM TM1 TurboIntegrator Debugger for developers
- 4 Planning that's ready for GDPR
- 5 Deploy on cloud or on premises – without a lengthy migration process
- 5 An upgrade designed around your needs

## Highlights

---

- Access and analyze data through a dynamic, self-service Workspace
  - Uncover predictive insights automatically – from internal or external data
  - Create vivid reports with automated visualizations
  - Engage more users through the familiar Microsoft Excel interface
  - Analyze cubes and dimensions faster with hierarchies
  - Deploy on cloud or on premises – with no lengthy migration
  - Be ready for the European Union's General Data Protection Regulation (GDPR)
-

## Speed, agility and foresight in one solution

IBM® Planning Analytics is the fast, flexible and complete planning solution built on the powerful, multi-dimensional technology of IBM TM1®.

With an intuitive interface — praised for its ease of use by customers and analysts alike — IBM Planning Analytics goes beyond automating manual tasks and improving process efficiency. It offers cognitive capabilities that help you uncover predictive insights directly from both internal and external sources. It enables you to perform virtual attribute analysis for unprecedented insight into your IBM TM1 data. And it helps you create and share compelling reports using a variety of automated visualizations.

## IBM Planning Analytics Workspace — the interface that revolutionizes TM1

IBM Planning Analytics Workspace is the customizable user interface that is the new face of IBM TM1. It enables users to combine data from any cube in any IBM TM1 database into a single view, using a viewer, websheets, charts or cell widgets. No time-consuming data conversion is necessary.

Workspace coordinates three forms of data selectors: tile, list and slider. It enables report authors and consumers to intuitively filter data-rich “books” using buttons to navigate across content, carrying the context along as needed.

Workspace supports analysis, reporting and write-back with an interactive viewer, which makes it easy to navigate multi-dimensional cubes and convert “data exploration” into charts you can use for presentations and to share results with others. Workspace is also mobile, so you can work with Workspace books at your convenience, on an iPad or other tablet device.

In addition to Workspace, the IBM TM1 Web user experience (UX) has been totally redesigned for IBM Planning Analytics. Websheets load, scroll and refresh faster than ever before. The tight coordination of IBM Planning Analytics with IBM Cognos Analytics (formerly IBM Cognos Business Intelligence) and IBM Watson Analytics is another plus.

## Visualizations that bring insights to life

Workspace features a highly visual, freeform design that offers more than 25 different graphics, including charts, maps, scorecards, images and shapes, plus text and video. These automated visualizations help you create vivid, impactful reports to share insights with decision makers. Quick searching and Snap Commands give the interface a natural-language-like feel.

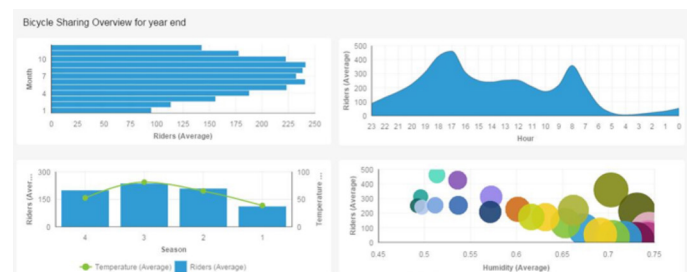


Figure 1: Develop and share insights with colorful visualizations

## Hierarchies allow more flexible analysis

The “hierarchies” capability in IBM Planning Analytics provides both technical advantages and business-user benefits. With hierarchies, you’re not limited to the traditional definition of cubes. You can perform more in depth, granular analysis using “attributes” to describe the characteristics of customers, products, projects, sales programs and more. Attribute data can be leveraged seamlessly in the form of “virtual dimensions” using data that existed at the time the cube was created or introduced later on.

Virtual dimensions offer benefits including:

- More dynamic hierarchies, since attributes change over time
- Less ongoing maintenance
- Faster calculation, thanks to smaller cube size
- Ad hoc hierarchies can be created and immediately introduced into Excel, web or mobile for quick, convenient analysis

You can also see the intersections of several hierarchies within the same dimension, enabling you to drill down to find data points never before possible. In addition, hierarchies can be used for dimension reorganization and versioning and be implemented through an intuitive process with little setup needed.

### IBM Planning Analytics for Microsoft Excel

Users can explore and analyze data sourced from multidimensional planning models within the familiar Excel interface using IBM Planning Analytics for Microsoft Excel. This add-on lets you retain full Excel functionality and formatting, including graphing and built-in functions, while enjoying all the capabilities of a modern planning and analytics solution.

IBM Planning Analytics for Microsoft Excel is the successor to IBM Cognos Analysis for Microsoft Excel (CAFE). It provides Excel access to the IBM TM1 database with superior performance over wide-area networks. It integrates smoothly with Workspace, and both environments share a common UX, cube viewer and set editor.

IBM Planning Analytics for Microsoft Excel has four models of interaction:

1. Exploration for slice/dice/pivot analysis
2. Quick reports for fast worksheet design
3. Dynamic reports for row interactivity (zero suppression, expand, collapse)
4. Custom reports for highly formatted forms and reports

All reports created in IBM Planning Analytics for Microsoft Excel can be published for worksheet consumption in Workspace.

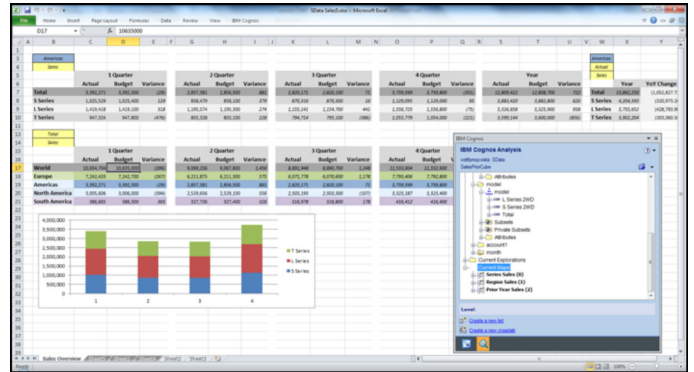


Figure 2: Access the solution through the familiar Microsoft Excel interface

### IBM TM1 TurboIntegrator Debugger for developers

IBM Planning Analytics includes the IBM TM1 TurboIntegrator Debugger, which provides programmer-quality breakpoints and variable analysis. It will especially appeal to IBM TM1 developers who design TurboIntegrator processes.

### Planning that's ready for GDPR

The European Union's General Data Protection Regulation (GDPR) takes effect May 25, 2018. And it's important to make sure that *all* of your business processes are ready. When it comes to your planning, upgrading to IBM Planning Analytics is a good place to start. The solution will be ready when the regulation takes effect.

→ [Learn more at the IBM GDPR web page](#)

---

## Deploy on cloud or on premises — without a lengthy migration process

IBM Planning Analytics can be deployed on the cloud, or on premises with IBM Planning Analytics Local. And the upgrade from IBM TM1 to IBM Planning Analytics does not require a lengthy migration process. Although the name has changed, the process is like upgrading to a new version of the same solution. You simply install and go, using your current model and mode of operation.

---

## An upgrade designed around your needs

We listened to feedback from IBM TM1 customers around the world and put everything we learned into IBM Planning Analytics. The solution provides a unified web, Excel, and mobile experience for all user roles and gives your organization the capabilities you need to compete successfully in today's constantly changing, frequently disrupted business environment. If you've realized value from IBM TM1, then IBM Planning Analytics is an upgrade too good to postpone.

## Next steps

Learn more about why so many of your peers have already made the change.

🗨️ Take the first step by scheduling a 30-minute upgrade strategy call and/or product demonstration with your IBM representative.

→ [Visit the IBM Planning Analytics website](#)



---

© Copyright IBM Corporation 2018

IBM Global Services  
Route 100  
Somers, NY 10589  
U.S.A.

Produced in the United States of America  
April 2018  
All Rights Reserved

IBM, the IBM logo and [ibm.com](http://ibm.com) are trademarks or registered trademarks of International Business Machines Corporation in the United States, other countries, or both. If these and other IBM trademarked terms are marked on their first occurrence in this information with a trademark symbol (® or ™), these symbols indicate U.S. registered or common law trademarks owned by IBM at the time this information was published. Such trademarks may also be registered or common law trademarks in other countries. A current list of IBM trademarks is available on the Web at "Copyright and trademark information" at [ibm.com/legal/copytrade.shtml](http://ibm.com/legal/copytrade.shtml) Other company, product and service names may be trademarks or service marks of others.

References in this publication to IBM products and services do not imply that IBM intends to make them available in all countries in which IBM operates.



Please Recycle